

Rustik UV (6 mm)

A stone carpet system that uses colourful stone banded in a clear aliphatic polyurethane resin to provide a natural looking exterior floor finish.

Suitable for outdoor areas in leisure and retail complexes, theme parks and holiday resorts.



Attractive:

A natural looking floor finish that is available in a range of colours.



UV Stable:

100% UV light stable and suitable for outdoor use.



Hard-Wearing:

Hard-wearing & abrasion resistant suitable for regular foot traffic & light vehicular traffic.



Versatile:

Quick to install and can be applied to most substrates.



White Sapphire



Smokey Quartz



Grey Moonstone



Black Sapphire

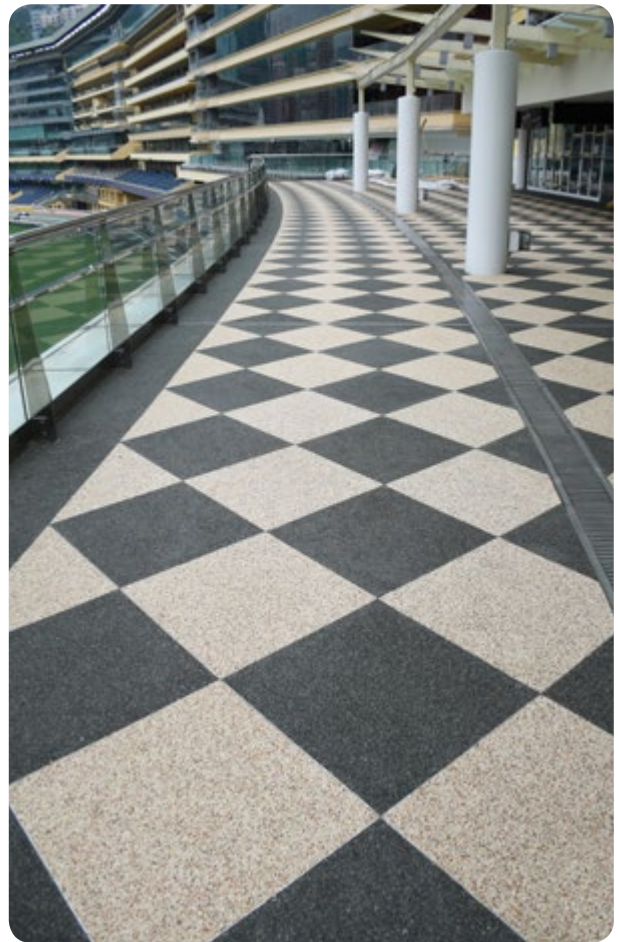


Jasper



Burnt Amber

The colour chart is for illustrative purposes only. For a full colour chart and samples, contact your local Flowcrete office.



Technical Profile*

SLIP RESISTANCE**

Method described in BS 7976-2 (typical values for 4-S rubber slider)

Dry > 40, Wet depends on specification (in accordance with HSE and UKSRG guidelines)

THERMAL RESISTANCE

Tolerant up to 65°C

CHEMICAL RESISTANCE

Contact technical department

COMPRESSIVE STRENGTH

BS 6319

> 30 N/mm²

BOND STRENGTH

Greater than cohesive strength of 25 N/mm² concrete. > 1.5 MPa

SPEED OF CURE

	10 °C	20 °C	30 °C
Light Traffic	36 h	24 h	16 h
Full Traffic	72 h	48 h	36 h
Full Chemical Cure	12 d	7 d	6 d

* These figures are typical properties achieved in laboratory tests at 20°C and at 50% Relative Humidity.

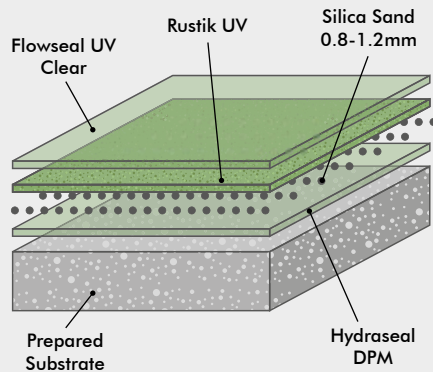
**The slipperiness of flooring materials can change significantly, due to the installation process, after short periods of use, due to inappropriate maintenance, longer-term wear and/or surface contaminants (wet or dry). Textured systems are recommended to meet slip resistance value requirements for wet conditions and/or surface contaminants (wet or dry) - please contact our Technical Advisors for further details and specifications.

Model Specification

System	Rustik UV
Finish	Natural Stone
Thickness	6 mm
Manufacturer	StonCor Middle East LLC

Preparatory work and application in accordance with manufacturer's instructions.

System Design



Products Included In This System

Bonding Agent	Hydraseal DPM
Sand Scatter	Silica Sand (0.8-1.2mm)
Body Coat	Rustik UV
Finishing Coat	Flowseal UV Clear

Detailed application instructions are available upon request.

Substrate Requirements

Concrete or screed substrate should be a minimum of 25 N/mm², free from laitance, dust and other contamination. The substrate should be dry up to 75% RH as per BS8204 and free from rising damp and ground water pressure. To produce the required aesthetic effect a smooth, level substrate is required. Contact Flowcrete for more advice.

Installation Service

The installation should be carried out by a licensed contractor with a documented quality assurance scheme. For details of our licensed contractors, contact our customer service team or enquire via our website at www.flowcrete.ae

Aftercare, Cleaning & Maintenance

Clean regularly using a single or double headed rotary scrubber drier in conjunction with a mildly alkaline detergent.

Environmental Considerations

The finished system is assessed as non-hazardous to health and the environment. The long service life and seamless surface reduce the need for repairs, maintenance and cleaning. Environmental and health considerations are controlled during manufacture and application of the products by Flowcrete staff and fully trained and experienced contractors.

Important Note

Flowcrete products are guaranteed against defective materials and manufacture and are sold subject to our standard 'Warranty, Terms and Conditions of Sale', copies of which can be obtained on request. Warranty does not cover suitability, fit for purpose or any consequential or related damages.

Further Information

To ensure you are specifying a fit-for-purpose floor, please consult our Technical Advisors or visit our website to register your interest in specifying one of the most durable floors on the market.

1. Light colours may require additional coats to achieve desired results 2. It is recommended that top coat colours are close to base coats colours to achieve desired results
3. This product is not UV stable and may discolour unless otherwise stated 4. System Data Sheet to be read in conjunction with Method Statement and Product data Sheets.