

Flowfresh ESD MF (4mm)



Description

Flowfresh ESD MF is an antistatic 4mm heavy duty, chemical resistant antimicrobial treated polyurethane resin floor finish. Attractive smooth matt coloured floor finish.

Uses

To provide an antistatic heavy duty, hard-wearing floor finish with exceptional chemical resistance. Typical areas for use are wet and dry process areas where the floor is subjected to heavy traffic, impact and chemical attack.

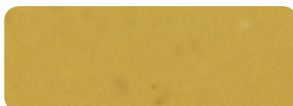
Benefits

- Antistatic to BS 2050
- Contains Polygiene, an antimicrobial additive based on silver ion technology
- Very high chemical resistance
- Easy to clean and sterilise – minimal joints
- High abrasion resistance
- Low odour during application

Project References

Available on request.

Standard Colour Chart



Rich Cream



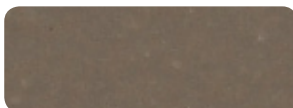
Warm Buff



Coral Red



Clay

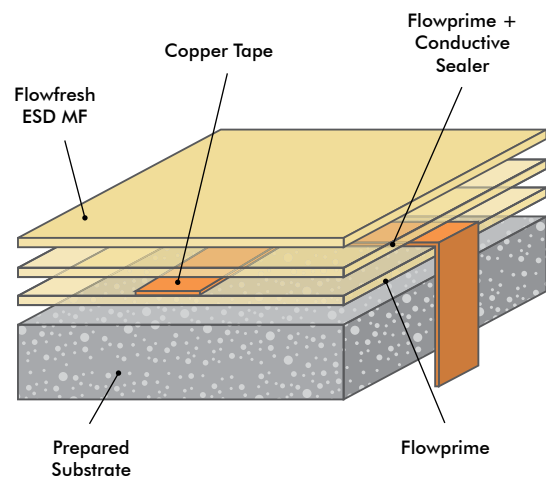


Pewter Grey



Signal Green

System Design



Model Specification

Product: Flowfresh ESD MF
Finish: Matt
Thickness: 4mm
Preparatory work and application in accordance with suppliers instructions.
Manufacturer: Flowcrete Middle East FZCO
Telephone : Customer Service +971 4 886 4728

Substrate Requirements

Concrete or screed substrate should be a minimum of 25N/mm², free from laitance, dust and other contamination. The substrate should be dry up to 75% RH as per BS 8204 and free from rising damp and ground water pressure. If no damp proof membrane is present Hydraseal DPM can be incorporated directly beneath the Flowfresh ESD MF system.

Products Included in this System

Flowprime
Conductive Grid of copper tape.
Flowprime
Scatter: Conductive Grade 50
Flowfresh ESD MF

Flowfresh ESD MF is a self-sealing finish.

Detailed application instructions are available upon request.

Conductive Grid

A network of 10mm wide, self-adhesive, conductive copper tape is always recommended in combination with any Flowcrete antistatic flooring system. The copper tape must be applied directly onto the cured Flowprime, 150mm in from the perimeter of the application. A further grid of tape should be applied within this area at 3m centres. Special attention should be paid to tape areas passing over expansion or bay joints to ensure permanent electrical continuity. The applied tape matrix should be secure and fully bonded to a confirmed earth point.

Installation Service

The installation should be carried out by a Flowcrete approved applicator with a documented quality assurance scheme. Obtain details of our approved contractors by contacting our customer service team or enquiring via our website at www.flowcrete.ae

Microbial / Fungal Resistance

The Polygiene antimicrobial additive incorporated into Flowfresh ESD MF provides control of most bacteria and fungi which come into contact with the floor.

Environmental Considerations

The finished system is assessed as non-hazardous to health and the environment. The long service life and seamless surface reduce the need for repairs, maintenance and cleaning. Environmental and health considerations are controlled during the manufacture and application of the products by Flowcrete staff and fully trained and experienced contractors.

Focus on the Floorzone

Flowcrete Middle East FZCO is a division of the Flowcrete Group, world leaders in specialist industrial and commercial flooring. Systems available include: underfloor heating systems, floor screeds, surface damp proof membranes, decorative floor finishes, seamless terrazzo, car park deck waterproofing and corrosion protection systems... to name just a few. Our corporate objective is to satisfy your flooring needs.

Technical Information

The figures that follow are typical properties achieved in laboratory tests at 20°C and at 50% Relative Humidity.

Reaction to Fire	B _{fl} - s ₁ (EN 13501-1)
Impact Resistance	IR15.0 (EN ISO 6272)
Wear Resistance	A1.0 (EN 13892-3)
Bond Strength	B2.8 (EN 13892-8)
Electrical Resistance	5 x 10 ⁴ – 1 x 10 ⁸ Ohms (to BS 2050)
Slip Resistance	Dry >40 low slip potential (typical values for 4-S rubber slider) Method described in BS 7976-2 (in accordance with HSE and UKSRG guidelines)

The slipperiness of flooring materials can change significantly, due to the installation process, after short periods of use, due to inappropriate maintenance, longer-term wear and/ or surface contaminants (wet or dry).

Textured systems are recommended to meet slip resistance value requirements for wet conditions and/ or surface contaminants (wet or dry) - please contact our Technical Advisors for further details and specifications.

Temperature Resistance	Tolerant up to 70°C
Water Permeability	Nil – Karsten test (impermeable)
Chemical Resistance	Contact Technical Department
Abrasion Resistance	ASTM D4060 Taber Abrader: 25mg loss per 1000 cycles (1 kg load using H22 wheels) BS 8204-2: Class AR2
Compressive Strength	>50 N/mm ² (BS 6319)
Flexural Strength	20 N/mm ² (BS 6319)
Tensile Strength	10 N/mm ² (BS 6319)
Complies with BS 8204-6/FerFA category 7	

Speed of Cure (per layer)

	10°C	20°C	30°C
Light Traffic	36 hrs	24 hrs	12 hrs
Full traffic	72 hrs	48 hrs	24 hrs
Full chemical cure	10 days	7 days	5 days

Aftercare - Cleaning and Maintenance

Clean regularly using a single or double headed rotary scrubber drier in conjunction with a mildly alkaline detergent.

Important Note

Flowcrete's products are guaranteed against defective materials and manufacture and are sold subject to its standard Terms and Conditions of Sale, copies of which can be obtained on request.

Further Information

To ensure you are specifying a fit for purpose flooring for your project please consult our Technical Advisors on the number below or visit our website to register your interest in specifying one of the most durable floors on the market.