



## FLOWFAST

► A range of decorative acrylic resin floor coatings containing a powerful methyl methacrylate (MMA) catalyst that can cut floor cure times down to just two hours.

# Flowfast Range Technical Profile



Ready to use just two hours after application Flowcrete's speediest flooring solution delivers unrivalled installation and cure times as well as an eye-catching finish.

Available in a creative mix of colours and finishes, Flowfast is well-suited to the commercial sector, where it has been gaining speed at a number of airports, shopping centres, residential developments, underground rail stations, stadia buildings and arena complexes across the globe.

Offering chemical, wear and slip resistance, Flowfast is also a popular choice with the food processing, mechanical, chemical and electronic goods industries where it's seamless, durable finish offers an excellent platform for hygiene and heavy industry.

## Application Suitability



Retail



Education



Food & Beverage



Leisure



Offices



Healthcare

## Chemical Resistance

ACIDS		ALKALIS		ORGANIC		OTHER			
Acetic Acid 25%	✓	Caustic Soda	✓	Petroleum	✓	Crude Oil	✓	Vinegar	✓
Hydrochloric Acid 37%	✓	Potassium Hydroxide 50%	✓	Formaldehyde 37%	✓	Calcium Chloride	✓	Wine	✓
Lactic Acid 90%	✓	Lime Milk	✓	Diesel	✓	Bleach	✓	Beer	✓
Nitric Acid 10%	✓	Sodium Hydroxide 30%	✓	Kerosene	✓	Blood	✓	Ammonia	✓
Sulphuric Acid 50%	✓	Ammonia 10%	✓	White Spirit	✓	Hydrogen Peroxide 30%	✓	Mineral Oil	✓
Tartaric Acid 50%	✓	Aluminium Hydroxide	✓	Turpentine	✓	Sodium Chloride	✓	Antifreeze	✓

\*Third Party Test Certification available on request.

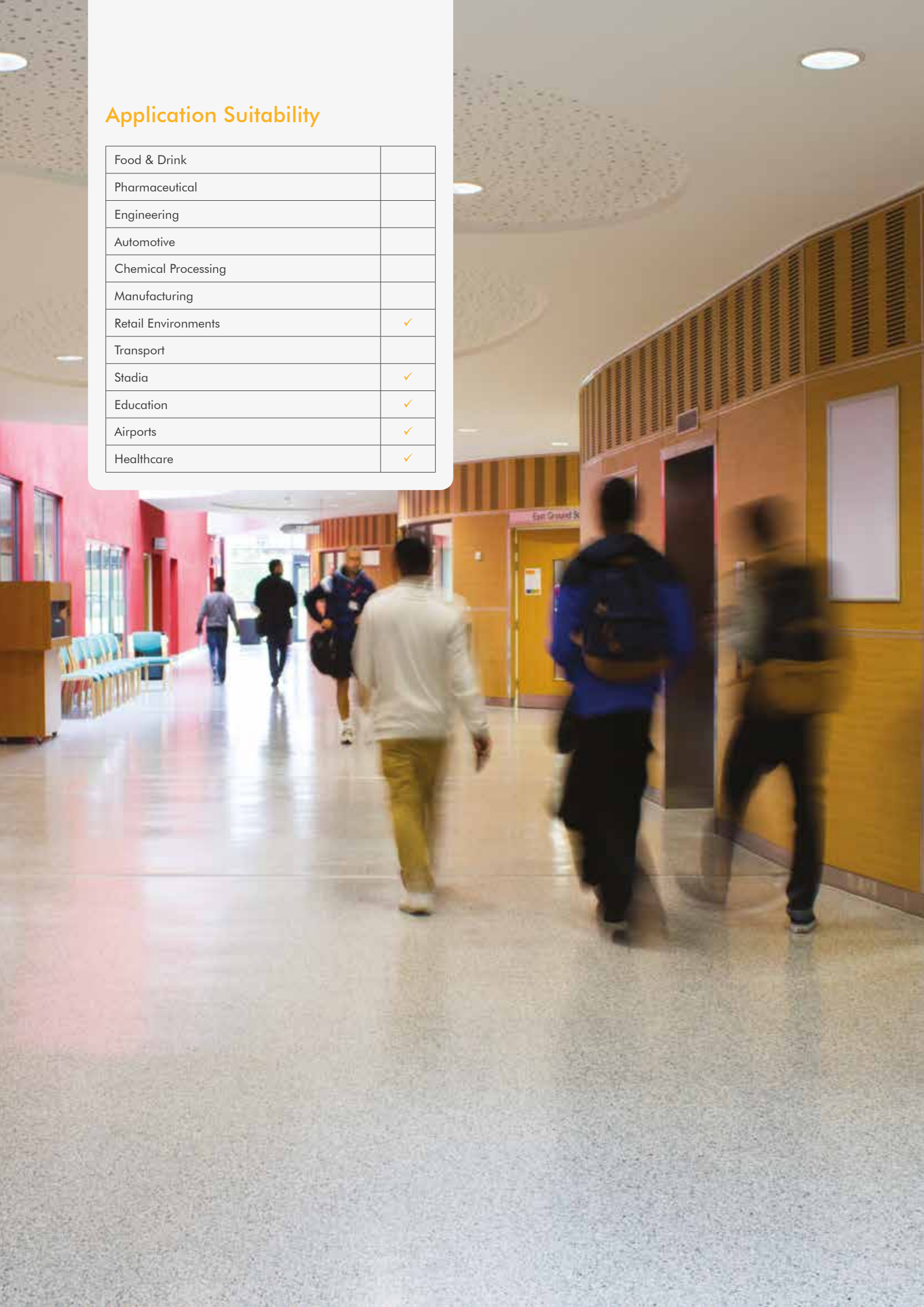
# System Components

	DESCRIPTION	USES
<b>Flowfast Standard Primer</b>	A 2-component low viscosity MMA based primer for concrete and cementitious substrates.	Used for priming concrete, screeds and wood, prior to the installation of Flowfast resins.
<b>Flowfast Asphalt Primer</b>	A 2-component low viscosity MMA based primer for filled asphalt and bitumen substrates.	Used for priming asphalt or bitumen screeds prior to the installation of Flowfast resins.
<b>Flowfast Ceramic / Metal Primer</b>	A 2-component low viscosity MMA based primer for metal and ceramic tile substrates.	Used for priming metal and ceramic substrates prior to the installation of Flowfast resins. Not suitable for non-ferrous metals and Zinc.
<b>Flowfast Damp Primer</b>	A 2-component low viscosity MMA based primer designed for damp cementitious substrates.	Used for priming damp concrete and screeds prior to the installation of Flowfast resins.
<b>Flowfast Standard Binder</b>	A 2-component, clear, medium viscosity MMA based binder for Flowfast floor coatings.	Used as a binder, primarily in Flowfast systems with decorative aggregates and flakes.
<b>Flowfast SL Binder</b>	A 2-component, clear, medium viscosity MMA based binder with improved flow properties for self smoothing Flowfast floor coatings.	Used only as part of the Flowfast SL system.
<b>Flowfast Flexible Binder</b>	A 2-component, clear, medium viscosity MMA based elasticised binder for use with Flowfast floor coatings.	Used as a binder in the formulation of flexible membranes and coating systems that are to be exposed to sub zero temperatures.
<b>Flowfast Hot Water / Oil Binder</b>	A 2-component, clear, medium viscosity MMA based binder for Flowfast floor coatings.	Used as a binder in applications exposed to hot water, fats and oils, primarily in Flowfast systems using decorative quartz.
<b>Flowfast Cove Mix</b>	A 2-component, clear, thixotropic MMA based binder for cove details.	Used with Flowfast resins containing quartz aggregates as a binder on cove details. Systems using Flowfast Cove Mix must always be treated with a Flowfast sealer.
<b>Flowfast Standard Seal</b>	A 2-component, UV-resistant, low viscosity MMA based sealer for Flowfast floor coatings.	Used as a general purpose sealer for smooth or lightly textured profiles, primarily in Flowfast systems with decorative aggregates and flakes.
<b>Flowfast Flexible Seal</b>	A 2-component, elastified, UV-resistant, low viscosity MMA based sealer for Flowfast floor coatings.	Used on elasticised Flowfast floor coatings or for outdoor applications.
<b>Flowfast Hot Water / Oil Seal</b>	A 2-component, clear, medium viscosity MMA based sealer for Flowfast floor coatings.	Used as a sealer in applications exposed to hot water, fats and oils, primarily in Flowfast systems using decorative quartz.
<b>Flowfast Cleaner</b>	A clear liquid smoothing aid for the application of Flowfast mortar coatings.	Used to moisten the trowel during application of Flowfast mortar coatings. The product is also an excellent agent for cleaning application tools.
<b>Flowfast F1 Mortar Standard*</b>	A 2-component, ready to use, repair mortar, based on MMA resin - designed for cementitious substrates that have a RH up to 97% (to BS 8204).	Used to repair damage, holes and imperfections in concrete substrates. Can be used in machine bases, joint arises, drill and bolt holes.

\* For application temperatures below 0°C, use Flowfast F1 Mortar Cold Grade (0 to -25°C).  
(For full product data information, please contact your local Flowcrete office).

## Application Suitability

Food & Drink	
Pharmaceutical	
Engineering	
Automotive	
Chemical Processing	
Manufacturing	
Retail Environments	✓
Transport	
Stadia	✓
Education	✓
Airports	✓
Healthcare	✓



# Flowfast Terrosso

A seamless, decorative, durable MMA floor finish that delivers a fast track transformation for commercial and industrial environments.

Comprising a blend of flakes in a choice of swatches, Flowfast Terrosso offer extensive design potential with an attractive finish.



### Fast Cure:

MMA additives speed up cure time, reducing construction schedules.



### Attractive:

Offers extensive design potential to deliver the wow-factor underfoot.



### Versatile:

Can be laid over existing hard surfaces such as tiles, marble or terrazzo.



### Seamless:

Delivers a hygienic seam-free surface that is easy to clean and maintain.



### Resistant:

Holds its own against impact, traffic and chemical attack.

## Colours



Cream 111



Beige 112



Red 311



Blue 511



Light Grey 711



Signal Grey 712



Mid Grey 713



Dark Grey 714

Available in 1 - 3 mm and 5 - 7 mm flake sizes.

The applied colours may differ from the examples shown. For a full colour chart and samples, contact your local Flowcrete office.

## Technical Profile

### COMPRESSIVE STRENGTH

DIN 1164	>40 N/mm <sup>2</sup>
----------	-----------------------

### IMPACT RESISTANCE

ISO6272 (1kg)	>1.8 m
ISO6272 (2kg)	>1.5 m

### TEMPERATURE RESISTANCE

Sustained	Up to 50°C
-----------	------------

### WATER PERMEABILITY

Karsten Test	Nil-Impermeable
--------------	-----------------

### SLIP RESISTANCE\*

BS7976-2 (Pendulum Slip Test)	Dry >40 Wet (depends on spec.)
----------------------------------	-----------------------------------

### ABRASION RESISTANCE

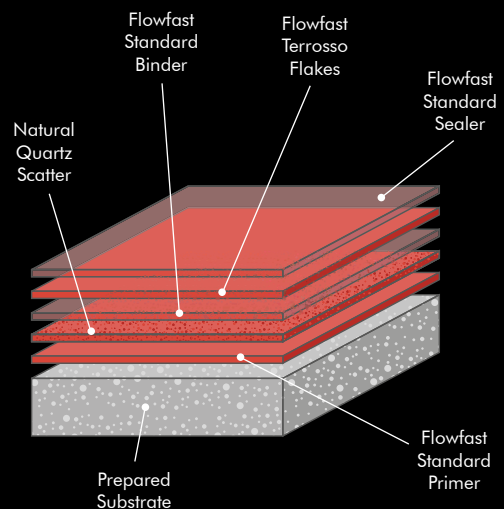
BS8204-2	Class AR2
----------	-----------

### BOND STRENGTH

Primed Concrete	>1.5 N/mm <sup>2</sup>
-----------------	------------------------

### SPEED OF CURE: 0-30°C\*

Light Traffic	2 Hours
Full Traffic & Chemical Cure	2-3 Hours



\* Cure times at temperatures between 0-30°C can be achieved by altering the quantity of catalyst used. For applications falling outside of this temperature range, please contact your local Flowcrete Technical Department.

# Flowfast Kristalina

A smooth, decorative, sparkling MMA resin floor finish that delivers a fast track solution for any modern contemporary environment.

Combining functionality and shimmering style, Flowfast Kristalina can create a luxurious finish that gives the right first impression.



### Fast Cure:

MMA additives speed up cure time, reducing construction schedules.



### Attractive:

Offers extensive design potential to deliver the wow-factor underfoot.



### Versatile:

Can be laid over existing hard surfaces such as tiles, marble or terrazzo.



### Seamless:

Delivers a hygienic seam-free surface that is easy to clean and maintain.



### Resistant:

Holds its own against impact, traffic and chemical attack.

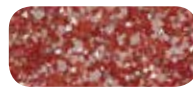
## Colours



Azure Blue



Clementine



Cranberry



Dalmatian



Ebony



Emerald



Gold



Granite



Pacific Blue



Peacock

The applied colours may differ from the examples shown. For a full colour chart and samples, contact your local Flowcrete office.

## Technical Profile

### COMPRESSIVE STRENGTH

BS6319	>40 N/mm <sup>2</sup>
--------	-----------------------

### IMPACT RESISTANCE

ISO6272 1kg	>1.8 m
ISO6272 2kg	>1.5 m

### TEMPERATURE RESISTANCE

Sustained	Up to 50°C
-----------	------------

### WATER PERMEABILITY

Karsten Test	Nil-Impermeable
--------------	-----------------

### SLIP RESISTANCE

BS7976-2 (Pendulum Slip Test)	Dry >40, Wet (depends on spec.)
----------------------------------	------------------------------------

### ABRASION RESISTANCE

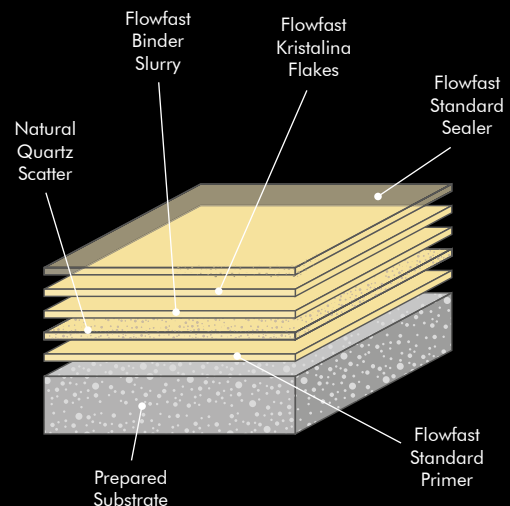
BS8204-2	Class AR2
----------	-----------

### BOND STRENGTH

Primed Concrete	>1.5 MPa
-----------------	----------

### SPEED OF CURE: 0-30°C\*

Light Traffic	2 Hours
Full Traffic & Chemical Cure	2-3 Hours



\* Cure times at temperatures between 0-30°C can be achieved by altering the quantity of catalyst used. For applications falling outside of this temperature range, please contact your local Flowcrete Technical Department.



## Application Suitability

Food & Drink	
Pharmaceutical	
Engineering	
Automotive	
Chemical Processing	
Manufacturing	
Retail Environments	✓
Transport	
Stadia	✓
Education	✓
Airports	✓
Healthcare	✓

# Flowfast Quartz

A hard wearing, decorative, fast curing MMA resin floor topping made up of colour stable quartz granules in a clear resin binder.

Ideal for use in both commercial and industrial environments, Flowfast Quartz will stand up to any area of heavy traffic.

- 
**Fast Cure:** MMA additives speed up cure time, reducing construction schedules.
- 
**Attractive:** Offers extensive design potential to deliver the wow-factor underfoot.
- 
**Versatile:** Can be laid over existing hard surfaces such as tiles, marble or terrazzo.
- 
**Seamless:** Delivers a hygienic seam-free surface that is easy to clean and maintain.
- 
**Resistant:** Holds its own against impact, traffic and chemical attack.

## Colours



The applied colours may differ from the examples shown. For a full colour chart and samples, contact your local Flowcrete office.

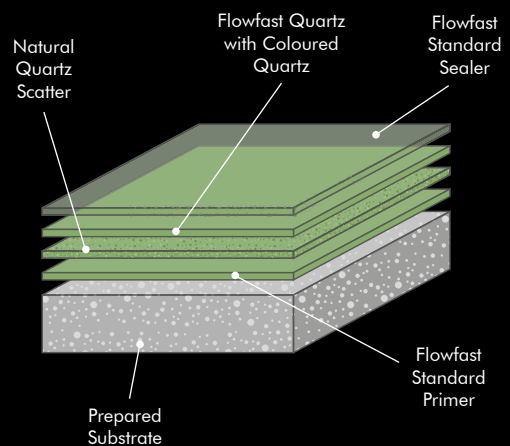
## Technical Profile

COMPRESSIVE STRENGTH	
BS6319	>40 N/mm <sup>2</sup>
FLEXURAL STRENGTH	
BS6319	20 N/mm <sup>2</sup>
TENSILE STRENGTH	
BS6319	15 N/mm <sup>2</sup>
IMPACT RESISTANCE	
ISO6272 1kg	> 1.8 m
ISO6272 2kg	> 1.5 m
TEMPERATURE RESISTANCE	
Sustained	Up to 70°C

WATER PERMEABILITY	
Karsten Test	Nil-Impermeable
SLIP RESISTANCE	
BS7976-2 (Pendulum Slip Test)	Dry >40, Wet (depends on spec.)

ABRASION RESISTANCE	
BS8204-2	Class AR1
BOND STRENGTH	
Primed Concrete	> 1.5 MPa

SPEED OF CURE: 0-30°C*	
Light Traffic	2 Hours
Full Traffic & Chemical Cure	2-3 Hours



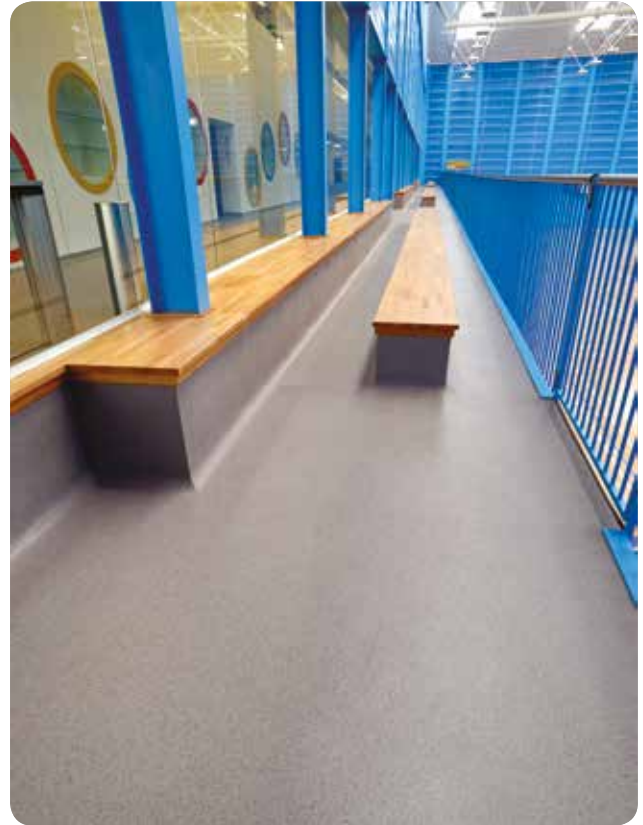
\* Cure times at temperatures between 0-30°C can be achieved by altering the quantity of catalyst used. For applications falling outside of this temperature range, please contact your local Flowcrete Technical Department.





## Application Suitability

Food & Drink	✓
Pharmaceutical	✓
Engineering	✓
Automotive	✓
Chemical Processing	✓
Manufacturing	✓
Retail Environments	
Transport	
Stadia	✓
Education	
Airports	
Healthcare	



# Flowfast Coating

Flowfast Coating is a seamless, pigmented, fast curing MMA resin floor coating, developed for light to medium traffic environments.

Flowfast Coating has been developed to enable very fast track applications, therefore dramatically reducing program time.



### Fast Cure:

MMA additives speed up cure time, reducing construction schedules.



### Chemical Resistant:

Withstands potentially corrosive cleaning agents and spillages.



### Slip Resistant:

Excellent slip resistance in dry and wet conditions.



### Resistant:

Holds its own against impact, traffic and chemical attack.



### UV Stable:

Has an excellent resistance profile to UV light.

## Colours



Ivory



Yellow



Red



Light Blue



Blue



Green



Light Grey



Mid Grey



Dark Grey



Black

The applied colours may differ from the examples shown. For a full colour chart and samples, contact your local Flowcrete office.

## Technical Profile

### IMPACT RESISTANCE

ISO6272 1kg	> 1.8 m
ISO6272 2kg	> 1.5 m

### TEMPERATURE RESISTANCE

Sustained	Up to 50°C
-----------	------------

### WATER PERMEABILITY

Karsten Test	Nil-Impermeable
--------------	-----------------

### SLIP RESISTANCE

BS7976-2 (Pendulum Slip Test)	Dry >40, Wet >20
With graded aggregate incorporated	Dry >60, Wet >50

### ABRASION RESISTANCE

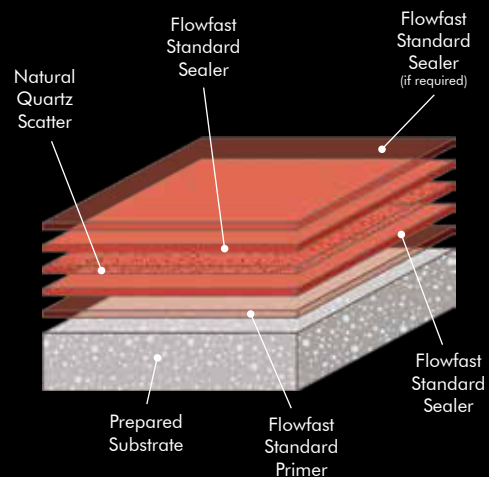
BS8204-2	Class AR2
----------	-----------

### BOND STRENGTH

Primed Concrete	> 1.5 MPa
-----------------	-----------

### SPEED OF CURE: 0-30°C\*

Light Traffic	2 Hours
Full Traffic & Chemical Cure	2-3 Hours



\* Cure times at temperatures between 0-30°C can be achieved by altering the quantity of catalyst used. For applications falling outside of this temperature range, please contact your local Flowcrete Technical Department.

# Flowfast Rapid Transit SR

A fast track and fire resistant acrylic resin based flooring system that contains natural quartz aggregates ideal for areas of heavy foot traffic.

Flowfast Rapid Transit SR offers a joint-free and positively textured coloured floor finish with exceptional chemical, wear and slip resistance.



### Fast Cure:

MMA additives speed up cure time, reducing construction schedules.



### Fire Resistant:

Ideal for use in areas of paramount fire safety. Fire resistant to L.U.L. Section 12.



### Seamless:

Delivers a hygienic seam-free surface that is easy to clean and maintain.



### Resistant:

Holds its own against impact, traffic and chemical attack.



### UV Stable:

Has an excellent resistance profile to UV light.

## Colours



Signal Yellow



Sky Blue



Forest Green



Tile Red



Goosewing Grey



Mid Grey



Dark Grey



Black

## Technical Profile

### COMPRESSIVE STRENGTH

BS6319	>40 N/mm <sup>2</sup>
--------	-----------------------

### FLEXURAL STRENGTH

BS6319	>20 N/mm <sup>2</sup>
--------	-----------------------

### IMPACT RESISTANCE

ISO6272 1kg	>1.8 m
ISO6272 2kg	>1.5 m

### TEMPERATURE RESISTANCE

Sustained	Up to 50°C
-----------	------------

### WATER PERMEABILITY

Karsten Test	Nil-Impermeable
--------------	-----------------

### SLIP RESISTANCE

BS7976-2 (Pendulum Slip Test)	Dry >40, Wet (depends on spec.)
----------------------------------	------------------------------------

### ABRASION RESISTANCE

BS8204-2	Class AR2
----------	-----------

### BOND STRENGTH

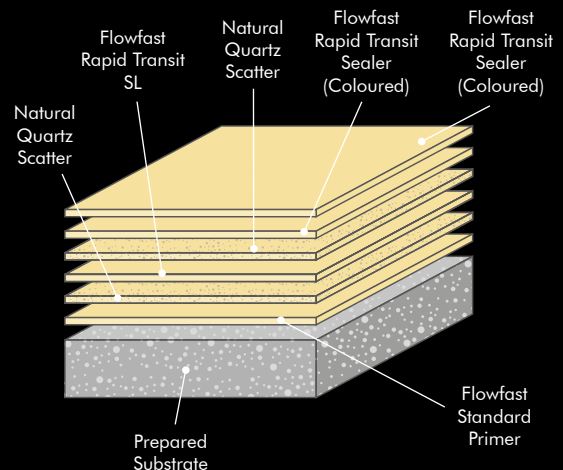
Primed Concrete	>1.5 MPa
-----------------	----------

### FIRE RESISTANCE

BS476-Part 7	L.U.L. Section 12
--------------	-------------------

### SPEED OF CURE: 0-30°C\*

Light Traffic	2 Hours
Full Traffic & Chemical Cure	2-3 Hours



\* Cure times at temperatures between 0-30°C can be achieved by altering the quantity of catalyst used. For applications falling outside of this temperature range, please contact your local Flowcrete Technical Department.

The applied colours may differ from the examples shown. For a full colour chart and samples, contact your local Flowcrete office.



## Flowcrete

World leader in seamless resin flooring solutions and other specialist coatings.

### Africa

South Africa +27 31 701 0017 southafrica@flowcrete.com

### Asia Pacific (APAC)

Australia	+61 7 3205 7115	australia@flowcrete.com
Bangladesh	+88 02 985 7222	bangladesh@flowcrete.com
Hong Kong	+852 2795 0478	hongkong@flowcrete.com
Indonesia	+62 21 252 3201	indonesia@flowcrete.com
Malaysia	+60 3 6277 9575	asia@flowcrete.com
Pakistan	+60 3 6277 9575	pakistan@flowcrete.com
Philippines	+63 2 834 6506	philippines@flowcrete.com
Singapore	+60 3 6277 9575	singapore@flowcrete.com
Taiwan	+60 3 6277 9575	taiwan@flowcrete.com
Thailand	+66 2539 3424	thailand@flowcrete.com
Vietnam	+84 28 6287 0846	vietnam@flowcrete.com

## Europe & Middle East (EME)

Bulgaria	+359 898 61 58 31	bulgaria@flowcrete.com
Denmark	+46 435 40 01 10	denmark@flowcrete.com
France	+33 1 60 61 74 42	france@flowcrete.com
Italy	+39 339 4853258	italy@flowcrete.com
Norway	+47 6486 0830	norway@flowcrete.com
Poland	+48 22 879 8907	poland@flowcrete.com
Romania	+40 766 596 991	romania@flowcrete.com
Russia	+7 916 931 3513	russia@flowcrete.com
Spain	+34 937 07 0872	spain@flowcrete.com
Sweden	+46 435 40 01 10	sweden@flowcrete.com
Turkey	+90 212 2946570	turkey@flowcrete.com
UAE	+971 4 347 0460	uae@flowcrete.com
UK	+44 (0) 1270 753 000	uk@flowcrete.com

### India

India +91 44 40176600 india@flowcrete.com

## North America

Mexico	+55 44 40 94 00	mexico@flowcrete.com
USA	+1 513-943-4225	americas@flowcrete.com

\*Whilst every care has been taken to ensure that the information included in this document was accurate at the time of printing, Flowcrete reserves the right to change product specifications at any time without prior notice. The photographs and colours reproduced in this publication are within the constraints of the printing process and are not to be used for matching purposes. All photographs are used for approximate representation only and may not show the actual products on offer. E&OE.